

The Express

THE RIVER PLATE DAILY MAIL

Vol. II.

(MELVILLE HORA—Director)

MONTEVIDEO, TUESDAY, OCTOBER 23, 1888.

(ALL CORRESPONDENCE TO THE DIRECTOR)

Nº 187.

Pacific Steam Navigation Company

FORTNIGHTLY LINE OF STEAMERS

LIVERPOOL, THE RIVER PLATE, AND VALPARAISO.

The magnificent steamers of this Company will sail in the following order:

FOR EUROPE.	FOR THE PACIFIC.
ARAUCANIA, Capt. W. Wadsworth, 25th October, 1888, for Rio Janeiro, Bahia, Pernambuco, Lisbon, Bordeaux, Plymouth and Liverpool.	POTOSI Capt. J. B. Park, 31st October, 1888, for Punta Arenas, Coronel, Lota, Talcahuano, and Valparaiso.
SORATA, Capt. H. Brown, 1st November, 1888, for Rio Janeiro, Lisbon, Vigo, Bordeaux, Plymouth and Liverpool.	PATAGONIA Capt. L. Brown, 6th November, 1888, for Buenos Aires, Punta Arenas, Talcahuano, Valparaiso and other ports on Pacific Coast.
BRITANNIA Capt. Geo. Massey R. N. R., 23rd November, 1888, for Rio Janeiro, Bahia, Pernambuco, Lisbon, Bordeaux, Plymouth and Liverpool.	GALICIA, Capt. C. Anner, 12th November, 1888, for Punta Arenas, Coronel, Lota, Talcahuano, and Valparaiso.

All the above steamers run in connection with others of the same Company, which trade up the Pacific Coast as far as Panama.

The steamers *Arcaica*, *Sorata*, *Capitan*, *John Elder*, and *Patagonia* are illuminated with electric light. Every steamer has on board a doctor and a stewardess.

Passenger Fares.

To Vigo 1st class £35 2nd class £20 3rd class £10
To Bordeaux 1st class £35 2nd class £20 3rd class £10
To Plymouth and Liverpool 1st class £35 2nd class £20 3rd class £10
Return Tickets 1st class £52 10s. (good for twelve months).

AGENTS:—

MONTEVIDEO, SOLIS 55; BUENOS AIRES, CANGALLO 326; SANTOS, RIO JANEIRO, BAHIA, PERNAMBUCO, AND ST. VINCENT, C.Y. 6m1xp

United States & Brazil Mail Steamship Co.

American Line between New York and Rio Janeiro.

Touching at Saint Thomas, Barbadoes, Pará, Maranhão, Pernambuco, Bahia, and Santos.

The magnificent steamers of this Company are posted to arrive and sail as follows:

STEAMERS	Sailing from New York	Arrival at Rio Janeiro	Sailing from Rio Janeiro	Arrival at Santos	Sailing from Santos	Arrival at New York
ADVANCE	Sep 22	Oct. 10	Oct. 19	Oct. 23	Oct. 27	Nov. 18
FINANCE	Oct. 13	Nov. 6	Nov. 9	Nov. 13	Nov. 17	Dec. 9
ALLIANCE	Nov. 10	Dec. 4	Dec. 7	Dec. 11	Dec. 15	Jan. 6
ADVANCE	Dec. 1	Dec. 24	Dec. 27	Dec. 31	Jan. 4	Jan. 27
FINANCE	Dec. 22	Jan. 14	Jan. 17	Jan. 21	Jan. 25	Feb. 17
ALLIANCE	Jan. 12	Feb. 4	Feb. 7	Feb. 11	Feb. 15	Mar. 7

Passenger Fares.

From Montevideo or Buenos Aires to New York. 1st class \$185 2nd class \$90
Return tickets (good for twelve months). " " \$350

Wilson Sons & Co. Limited

AGENTS:—

MONTEVIDEO, SOLIS 55; BUENOS AIRES, CANGALLO 326; SANTOS, AND RIO JANEIRO.

7m2xp

The New Zealand Shipping Company, Limited.

Monthly line of Steamers between New Zealand and London.

Calling at Rio Janeiro and Teneriffe.

The new and magnificent steamers of this line will sail in the following order for Plymouth, on their homeward voyages from New Zealand, FROM RIO JANEIRO.

STEAMERS	TONNAGE	CAPTAINS	APPROXIMATE DATES OF SAILING
KAIKOURA	4,163	W. C. Crutchley, R.N.R.	Oct. 4
TONGARIRO	4,474	J. E. Bone	Nov. 1
AORANGI	4,163	J. Sutcliffe	Nov. 29
RIMUTAKA	4,165	W. A. Turpin	Dec. 27
RUAPEHU	4,473	H. E. Greenstreet	Jan. 24
KAIKOURA	4,474	W. C. Crutchley, R.N.R.	Feb. 21

All the steamers of this line are lighted by electricity, and have excellent accommodation for first, second, and third-class passengers.

Fares from Montevideo.

To London. 1st class £35 2nd class £25 3rd class £15
Return tickets (good for twelve months). " " £52 10s.

WILSON SONS & Co., Limited,

AGENTS:—

MONTEVIDEO, SOLIS 55; BUENOS AIRES, CANGALLO 326; AND RIO JANEIRO

8m1xp

SHAW SAVILL & ALBION Co., LIMITED.

Monthly line of Steamers between New Zealand and London.

Calling at Rio Janeiro and Teneriffe.

The magnificent steamers of this Company will depart as per following table for Plymouth, on their return from New Zealand, FROM RIO JANEIRO.

STEAMER	CAPTAIN	SAIL FROM	Arrive at Plymouth
TAINUI	B. J. Barlow	Sept. 20	Oct. 25
DORIC	J. W. Jennings	Oct. 18	Nov. 22
ARAWA	J. Stuart	Nov. 15	Dec. 20
IONIC	W. H. Kidley	Dec. 13	Jan. 17
COPTIC	J. Burton	Jan. 10	Feb. 14
TAINUI	B. J. Barlow	Feb. 7	Mar. 14

All the steamers of this Company have excellent accommodation for first, second and third-class passengers, and are lighted by electricity.

Fares from Montevideo.

To London. 1st class £35 2nd class £25 3rd class £15
Return tickets (good for twelve months). " " £52 10s.

WILSON SONS & Co., Limited,

AGENTS:—

MONTEVIDEO, SOLIS 55; BUENOS AIRES, CANGALLO 326; AND RIO JANEIRO

9m1xp

English Bank of the River Plate.

DIRECTORS:

O. A. Cater, of the firm J. W. Cater, Sons & Co., London.
Honorable S. Carr (Glyn, M. P.).
R. Honorable Lord C. Hamilton, M. P.
M. H. Moses, Director of the Buenos Aires and Pacific R. R. Co.
W. H. Rogers, of the firm Rogers, Best & Co. Liverpool.
A. E. Smithers, Managing Director.

Established in:

LONDON, BUENOS AIRES, ROSARIO DE SANTA FE, PAYSANDU, AND MONTEVIDEO

Authorised Capital 7,050,000 dols.

Interest on Deposits:

3 per cent on current account.
4 " " at ten days' notice.
4 " " for thirty days fixed.
4 1/2 " " for thirty days notice or 60 days fixed.
5 " " for 3 months fixed.
6 " " for 6 months fixed.
Other periods according to agreement.

Deposits of 25 dols. and upwards received. Interest paid on all deposits of 30 days, upwards.
For Discounts, Exchange, and other business apply to the Bank.

MONTEVIDEO-115, 117 & 119-CALLE MISIONES

J. Mac CRINDLE,

Manager

LONDON AND RIVER PLATE BANK (LIMITED)

LONDON, 52 Moorgate Street; PARIS, 16 rue HALÉVY

BUENOS AIRES; MONTEVIDEO; ROSARIO DE SANTA FE

Authorised Capital £2,000,000

Subscribed Capital 1,500,000

Reserve Fund 350,000

Current Accounts opened with Commercial Firms and private individuals. Customers have the advantage of having approved Bills discounted—of obtaining Loans upon Negotiable Securities, of Depositing Bills, Coupons, etc., for collection—subject to a conventional commission.

The Bank receives deposits either at sight, for fixed periods, or at thirty days' notice of withdrawal. Interest on which is regulated by the market value of money. The Bank notifying any change in rates, by Advertisement in the principal daily papers.

Letters of Credit issued to parties travelling abroad. Letters of Credit issued to parties for the purpose of purchasing Goods in Europe, the United States, etc., the terms of which can be ascertained on application to the Bank.

Parties wishing to bring out funds to the River Plate, can do so through the medium of the Bank's chief office.

No. 52 Moorgate-Street, London E. C.

Paris Branch 16 rue Halévy.

BILLS OF EXCHANGE

Issued and Purchased on the following places

LONDON

And all the principal towns of

ENGLAND, SCOTLAND, & IRELAND.

PARIS. And all the principal towns of FRANCE

AND OF

GERMANY

AFRICA

AUSTRALIA

BRAZIL

CANADA

CHILE

PORTUGAL

SWITZERLAND

UNITED STATES

ARGENTINE REPUBLIC

R. A. Thurburn

MANAGER

3m1xp

LONDON & BRAZILIAN BANK LIMITED

BANCO DE LONDRES Y BRASIL

Capital suscrito £1,250,000

Fondo de reserva 625,000

Fondo de reserva 325,000

Sucursal en Montevideo, Zabala 85

GIRA LETRAS DE CAMBIO SOBRE LAS SIGUIENTES PLAZAS:

LONDRES A cargo de London & Brazilian Bank Limited.

PARIS Los señores Glyn, Mills, Currie & Co.

HAMBURG Los señores Mallet Frères y Ca.

AMSTERDAM Los señores Schroder & Co.

GENOVA La Banque d'Anvers.

VENECIA Los señores Grant Brown y Ca.

VARIOS CORRESPONSALES.

DEPOSITOS DE DINERO.

DEPOSITOS DE DINERO.

DEPOSITOS DE DINERO.

DEPOSITOS DE DINERO.

DEPOSITOS DE DINERO.

DEPOSITOS DE DINERO.

DEPOSITOS DE DINERO.

DEPOSITOS DE DINERO.

DEPOSITOS DE DINERO.

DEPOSITOS DE DINERO.

DEPOSITOS DE DINERO.

DEPOSITOS DE DINERO.

DEPOSITOS DE DINERO.

THE EXPRESS

DAILY MORNING PAPER

OFFICES CALLE SOLIS 26

MONTEVIDEO

Cable Address:

"EXPRESS,"

Montevideo

Power-Bell Telephone No. 397

TERMS:—PAYABLE IN ADVANCE

SUBSCRIPTIONS

Per month.

Uruguay Republic \$120 gold

Argentina do. (including postage) 240 ml

Europe etc. do. 240 gold

do. do. do. 240 gold

Single copy 100 do.

Back number 100 do.

ADVERTISEMENTS

GENERAL TARIFF

Single column per centimeter per month \$140 gold

3 line advertisements such as "Wanted"

"To Let" etc. per 3 publications 150 do.

Advertisements—Single column per centimeter, per publication 150 do.

Advertisements—Single column per centimeter, per publication 150 do.

Advertisements—Single column per centimeter, per publication 150 do.

Advertisements—Single column per centimeter, per publication 150 do.

Advertisements—Single column per centimeter, per publication 150 do.

Advertisements—Single column per centimeter, per publication 150 do.

Advertisements—Single column per centimeter, per publication 150 do.

Advertisements—Single column per centimeter, per publication 150 do.

Advertisements—Single column per centimeter, per publication 150 do.

Advertisements—Single column per centimeter, per publication 150 do.

Advertisements—Single column per centimeter, per publication 150 do.

Advertisements—Single column per centimeter, per publication 150 do.

Advertisements—Single column per centimeter, per publication 150 do.

Advertisements—Single column per centimeter, per publication 150 do.

Advertisements—Single column per centimeter, per publication 150 do.

Advertisements—Single column per centimeter, per publication 150 do.

Advertisements—Single column per centimeter, per publication 150 do.

Advertisements—Single column per centimeter, per publication 150 do.

Advertisements—Single column per centimeter, per publication 150 do.

Advertisements—Single column per centimeter, per publication 150 do.

Advertisements—Single column per centimeter, per publication 150 do.

Advertisements—Single column per centimeter, per publication 150 do.

Advertisements—Single column per centimeter, per publication 150 do.

Advertisements—Single column per centimeter, per publication 150 do.

Advertisements—Single column per centimeter, per publication 150 do.

Advertisements—Single column per centimeter, per publication 150 do.

Advertisements—Single column per centimeter, per publication 150 do.

Advertisements—Single column per centimeter, per publication 150 do.

Advertisements—Single column per centimeter, per publication 150 do.

Advertisements—Single column per centimeter, per publication 150 do.

Advertisements—Single column per centimeter, per publication 150 do.

Advertisements—Single column per centimeter, per publication 150 do.

Advertisements—Single column per centimeter, per publication 150 do.

Advertisements—Single column per centimeter, per publication 150 do.

Advertisements—Single column per centimeter, per publication 150 do.

Advertisements—Single column per centimeter, per publication 150 do.

Advertisements—Single column per centimeter, per publication 150 do.

Advertisements—Single column per centimeter, per publication 150 do.

Advertisements—Single column per centimeter, per publication 150 do.

Advertisements—Single column per centimeter, per publication 150 do.

Advertisements—Single column per centimeter, per publication 150 do.

Advertisements—Single column per centimeter, per publication 150 do.

Advertisements—Single column per centimeter, per publication 150 do.

Advertisements—Single column per centimeter, per publication 150 do.

Advertisements—Single column per centimeter, per publication 150 do.

Advertisements—Single column per centimeter, per publication 150 do.

Advertisements—Single column per centimeter, per publication 150 do.

Advertisements—Single column per centimeter, per publication 150 do.

Advertisements—Single column per centimeter, per publication 150 do.

Advertisements—Single column per centimeter, per publication 150 do.

Advertisements—Single column per centimeter, per publication 150 do.

Advertisements—Single column per centimeter, per publication 150 do.

Advertisements—Single column per centimeter, per publication 150 do.

Advertisements—Single column per centimeter, per publication 150 do.

Advertisements—Single column per centimeter, per publication 150 do.

Advertisements—Single column per centimeter, per publication 150 do.

Advertisements—Single column per centimeter, per publication 150 do.

Advertisements—Single column per centimeter, per publication 150 do.

Advertisements—Single column per centimeter, per publication 150 do.

Advertisements—Single column per centimeter, per publication 150 do.

Advertisements—Single column per centimeter, per publication 150 do.

Advertisements—Single column per centimeter, per publication 150 do.

Advertisements—Single column per centimeter, per publication 150 do.

majority of the patients belong to a

class to whom, even if able to read, the

absence of books is not such a deprivation

and education, still, it must be confessed

that the presence of books, magazines,

papers, pictures and the like, even to the

most unlettered, must serve as an alleviation

to the contemplation of suffering fellow-beings

and hideous staring white walls. Hospital patients are sufferers,

but not criminals, and have a claim to

everything that sympathy can suggest for

the relief of their pains. This, and the

assistance given to the doctors care by cheerful surroundings and an

occupied mind is so generally recognized in

England and the States that the Hospitals

there solicit and acknowledge contributions

of books, pictures, flowers and the like

quite as earnestly as money gifts. The same

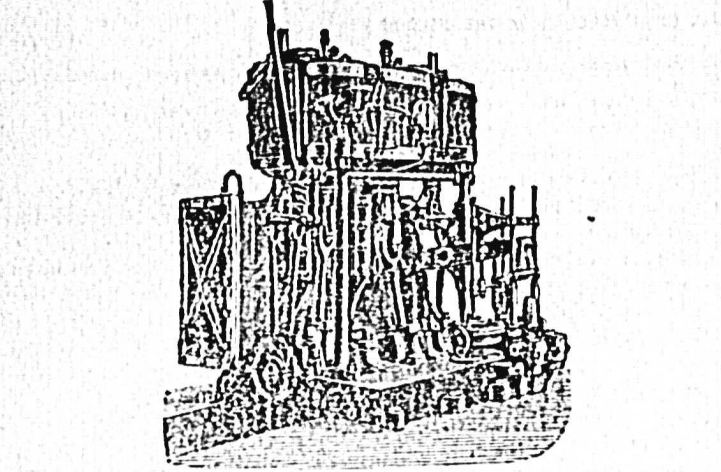
method might

JOHN HARLEY & Co.

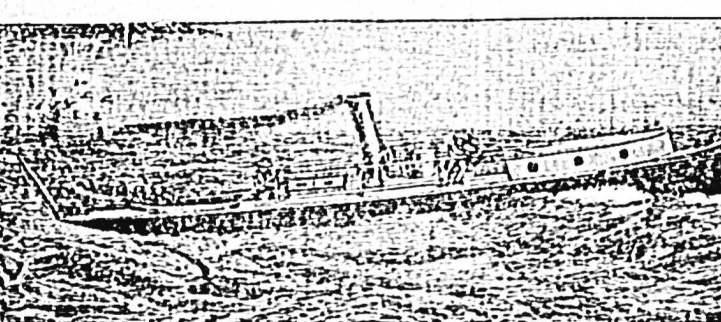
Importers of and Dealers in all classes of

MACHINERY, TOOLS, ACCESSORIES, &c.

Builders of small Steamships



Sole Agents of the celebrated makers, **Alex. WILSON & Co., London, and ROSS & DUNCAN, Glasgow.**



Steamers Building.

OSNABURG, 14,000 TONS, 55 feet keel with compound superficial condensing engine of the latest construction.
ALBERTON, 42 feet keel, compound engine.
AMERICA, 32 feet keel, high pressure engine.
Montevideo Deposit: Calle Colon 50, 52 and 54.

LAMPARAS "ROCHESTER."

De todas las diferentes lámparas del mundo (49,000 mas o menos) la lámpara "Rochester" da la luz mas grande y mas blanca.



"Rochester" da la luz mas grande y mas blanca.



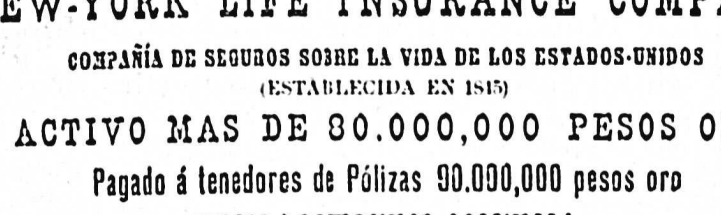
"Rochester" da la luz mas grande y mas blanca.



"Rochester" da la luz mas grande y mas blanca.



"Rochester" da la luz mas grande y mas blanca.



"Rochester" da la luz mas grande y mas blanca.

"Rochester" da la luz mas grande y mas blanca.

"Rochester" da la luz mas grande y mas blanca.

ROYAL MAIL STEAM PACKET COMPANY

REGULAR SERVICE BETWEEN EUROPE AND THE RIVER PLATE.

Sailings homeward from Montevideo on every alternate Wednesday

The Company's Splendid Steamer

"TAGUS"

Will leave on 31st October, taking passengers of all classes, mails, specie and cargo for

San Francisco, Rio Janeiro, Bahia, Pernambuco, Lisbon, Vigo and

all the steamers of this favorite line are fitted with refrigerators and Electric Light

and have every modern improvement for the comfort and safety of passengers.

Table wine supplied gratis to passengers of all classes.

Persons wishing to bring out their friends from Europe can arrange for their

passages with the Agent on reasonable terms.

NEW YORK

Through tickets issued for passage from Montevideo or Buenos Ayres to New York

via Southampton in combination with the well known steamers of the NORTH GERMAN

LLOYD STEAMSHIP CO.

For Freight Passage apply to

F. L. HUMPHREYS, Agent.

Office: 110 de las Piedad 117.

110 de las Piedad 117.

110 de las Piedad 117.

110 de las Piedad 117.

110 de las Piedad 117.

110 de las Piedad 117.

110 de las Piedad 117.

110 de las Piedad 117.

110 de las Piedad 117.

110 de las Piedad 117.

110 de las Piedad 117.

110 de las Piedad 117.

110 de las Piedad 117.

110 de las Piedad 117.

110 de las Piedad 117.

110 de las Piedad 117.

110 de las Piedad 117.

110 de las Piedad 117.

110 de las Piedad 117.

110 de las Piedad 117.

110 de las Piedad 117.

110 de las Piedad 117.

110 de las Piedad 117.

110 de las Piedad 117.

110 de las Piedad 117.

110 de las Piedad 117.

110 de las Piedad 117.

110 de las Piedad 117.

110 de las Piedad 117.

110 de las Piedad 117.

110 de las Piedad 117.

110 de las Piedad 117.

110 de las Piedad 117.

110 de las Piedad 117.

TELEGRAMS MARITIME NEWS

(HAYES AGENT.)

Buenos Aires 22.

Gold, cash 118, end of month 147.20

end of November, 160.00.

National Bank Shares, end of month 278.

Janco Corporation, cash 110.

Cedulas, K. 82.10, K. 82.20.

The "Estimote" sale.

Buenos Aires 22.

Gold, cash 118, end of month 147.20

end of November, 160.00.

National Bank Shares, end of month 278.

Janco Corporation, cash 110.

Cedulas, K. 82.10, K. 82.20.

The "Estimote" sale.

Buenos Aires 22.

Gold, cash 118, end of month 147.20

end of November, 160.00.

National Bank Shares, end of month 278.

Janco Corporation, cash 110.

Cedulas, K. 82.10, K. 82.20.

The "Estimote" sale.

Buenos Aires 22.

Gold, cash 118, end of month 147.20

end of November, 160.00.

National Bank Shares, end of month 278.

Janco Corporation, cash 110.

Cedulas, K. 82.10, K. 82.20.

The "Estimote" sale.

Buenos Aires 22.

Gold, cash 118, end of month 147.20

end of November, 160.00.

National Bank Shares, end of month 278.

Janco Corporation, cash 110.

Cedulas, K. 82.10, K. 82.20.

The "Estimote" sale.

Buenos Aires 22.

Gold, cash 118, end of month 147.20

end of November, 160.00.

National Bank Shares, end of month 278.

Janco Corporation, cash 110.

Cedulas, K. 82.10, K. 82.20.

The "Estimote" sale.

Buenos Aires 22.

Gold, cash 118, end of month 147.20

end of November, 160.00.

National Bank Shares, end of month 278.

Janco Corporation, cash 110.

Cedulas, K. 82.10, K. 82.20.

The "Estimote" sale.

Buenos Aires 22.

Gold, cash 118, end of month 147.20

ARGENTINE NEWS

Montevideo 22.

Gold, cash 118, end of month 147.20

end of November, 160.00.

National Bank Shares, end of month 278.

Janco Corporation, cash 110.

Cedulas, K. 82.10, K. 82.20.

The "Estimote" sale.

Buenos Aires 22.

Gold, cash 118, end of month 147.20

end of November, 160.00.

National Bank Shares, end of month 278.

Janco Corporation, cash 110.

Cedulas, K. 82.10, K. 82.20.

The "Estimote" sale.

Buenos Aires 22.

Gold, cash 118, end of month 147.20

end of November, 160.00.

National Bank Shares, end of month 278.

Janco Corporation, cash 110.

Cedulas, K. 82.10, K. 82.20.

The "Estimote" sale.

Buenos Aires 22.

Gold, cash 118, end of month 147.20

end of November, 160.00.

National Bank Shares, end of month 278.

Janco Corporation, cash 110.

Cedulas, K. 82.10, K. 82.20.

The "Estimote" sale.

Buenos Aires 22.

Gold, cash 118, end of month 147.20

end of November, 160.00.

National Bank Shares, end of month 278.

Janco Corporation, cash 110.

Cedulas, K. 82.10, K. 82.20.

The "Estimote" sale.

Buenos Aires 22.

Gold, cash 118, end of month 147.20

end of November, 160.00.

National Bank Shares, end of month 278.

Janco Corporation, cash 110.

Cedulas, K. 82.10, K. 82.20.

The "Estimote" sale.

Buenos Aires 22.

Gold, cash 118, end of month 147.20

end of November, 160.00.

National Bank Shares, end of month 278.

Janco Corporation, cash 110.

Cedulas, K. 82.10, K. 82.20.

The "Estimote" sale.

Buenos Aires 22.

Gold, cash 118, end of month 147.20

end of November, 160.00.

COMPANIA NACIONAL

Crédito y Obras Públicas.

El Consejo de Administración de la

Compañía Nacional de Crédito y Obras

Públicas pone en conocimiento de los

señores accionistas que el resultado de

los trabajos realizados durante el año

1887-1888, es el siguiente: El resultado

de los trabajos realizados durante el año

1887-1888, es el siguiente: El resultado

de los trabajos realizados durante el año

1887-1888, es el siguiente: El resultado

de los trabajos realizados durante el año

1887-1888, es el siguiente: El resultado

de los trabajos realizados durante el año

1887-1888, es el siguiente: El resultado

de los trabajos realizados durante el año

1887-1888, es el siguiente: El resultado

de los trabajos realizados durante el año

1887-1888, es el siguiente: El resultado

de los trabajos realizados durante el año

1887-1888, es el siguiente: El resultado

de los trabajos realizados durante el año

1887-1888, es el siguiente: El resultado

de los trabajos realizados durante el año

1887-1888, es el siguiente: El resultado

de los trabajos realizados durante el año

1887-1888, es el siguiente: El resultado

de los trabajos realizados durante el año

1887-1888, es el siguiente: El resultado

de los trabajos realizados durante el año

1887-1888, es el siguiente: El resultado

de los trabajos realizados durante el año

1887-1888, es el siguiente: El resultado

de los trabajos realizados durante el año

1887-1888, es el siguiente: El resultado

de los trabajos realizados durante el año

1887-1888, es el siguiente: El resultado

de los trabajos realizados durante el año

1887-1888, es el siguiente: El resultado

de los trabajos realizados durante el año

1887-1888, es el siguiente: El resultado

de los trabajos realizados durante el año

1887-1888, es el siguiente: El resultado

de los trabajos realizados durante el año

1887-1888, es el siguiente: El resultado

de los trabajos realizados durante el año

1887-1888, es el siguiente: El resultado

de los trabajos realizados durante el año

1887-1888, es el siguiente: El resultado

de los trabajos realizados durante el año

1887-1888, es el siguiente: El resultado

de los trabajos realizados durante el año

COMPANIA NACIONAL

Crédito y Obras Públicas.

El Consejo de Administración de la

Compañía Nacional de Crédito y Obras

Públicas pone en conocimiento de los

señores accionistas que el resultado de

los trabajos realizados durante el año

1887-1888, es el siguiente: El resultado

de los trabajos realizados durante el año

1887-1888, es el siguiente: El resultado

de los trabajos realizados durante el año

1887-1888, es el siguiente: El resultado

de los trabajos realizados durante el año

1887-1888, es el siguiente: El resultado

de los trabajos realizados durante el año

1887-1888, es el siguiente: El resultado

de los trabajos realizados durante el año

1887-1888, es el siguiente: El resultado

de los trabajos realizados durante el año

1887-1888, es el siguiente: El resultado

de los trabajos realizados durante el año

